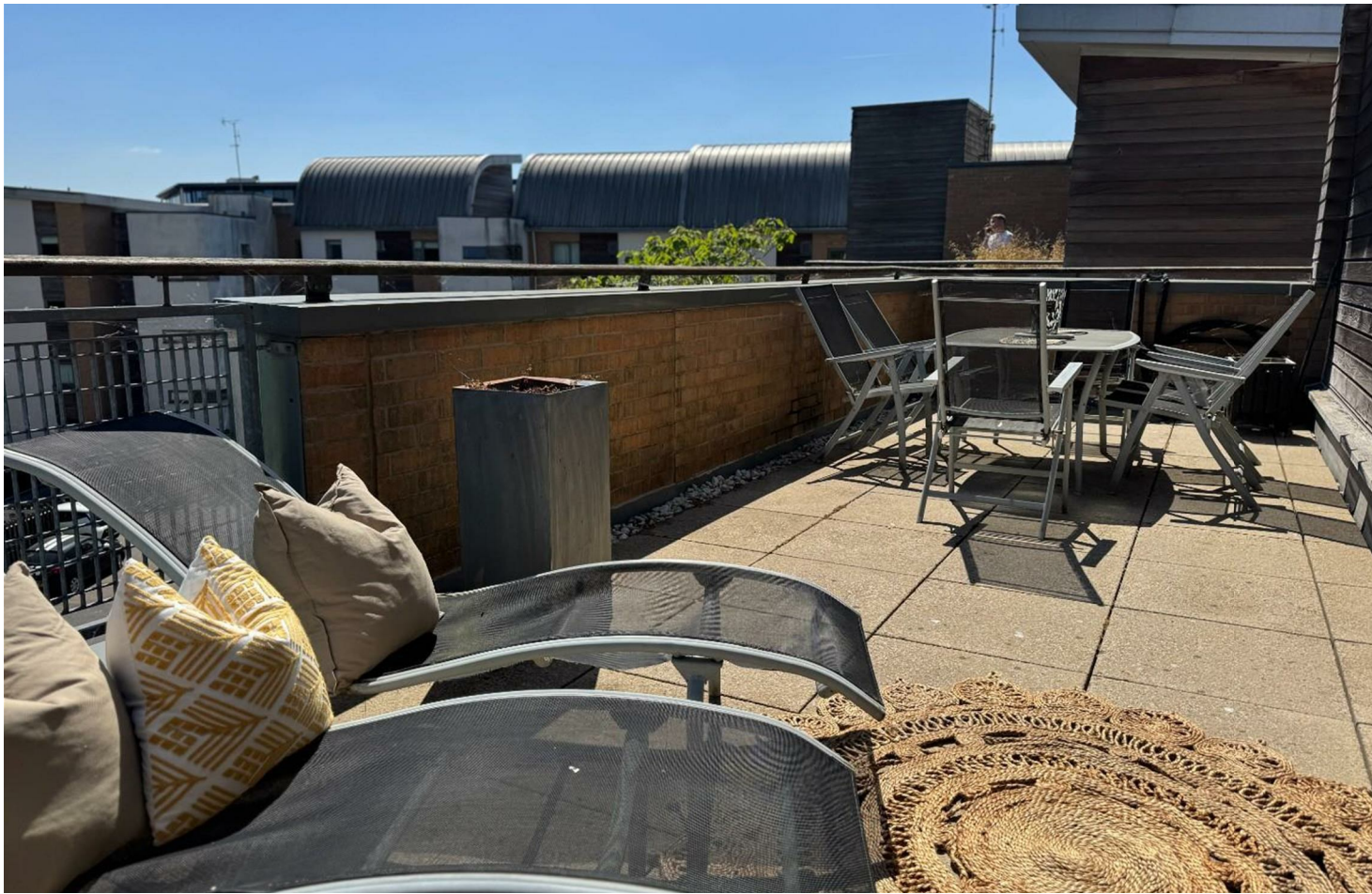




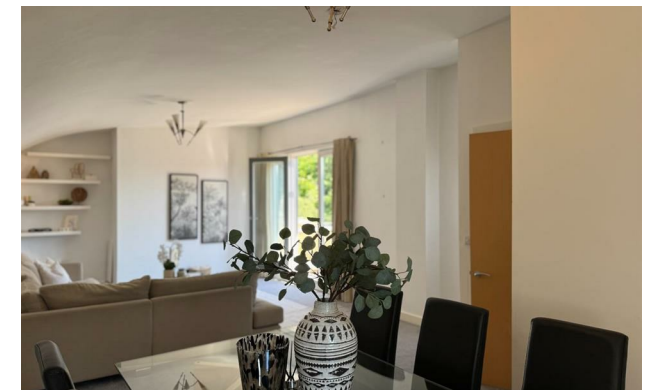
jordan fishwick

WEST DIDSBURY
117 Nell Lane



117 Nell Lane, West Didsbury, M20 2DU

£359,999

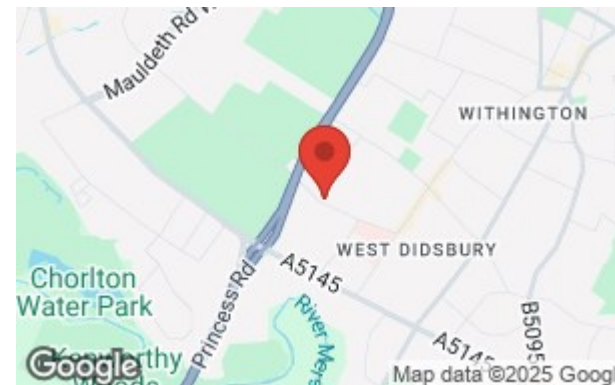


The Property

An appealing, two double bedroom, two-bathroom, duplex apartment with large sun terrace, forming part of a gated development which is just a 'short stroll' from the sought-after West Didsbury village. (1241 sq ft) The property offers spacious and stylish living accommodation set over two floors and in brief comprises: Communal entrance hall with a lift to all floors, private entrance hall, kitchen/dining room with Juliette balcony off, master bedroom with en-suite shower room and second double bedroom, whilst the floor above gives way to a spacious living room and sunny roof terrace. Externally there are well maintained communal grounds and electric gated access to the private allocated parking. *NO ONWARD CHAIN*

Directions

M20 2DU



- Top floor duplex apartment
- Large sun terrace
- Two double bedrooms
- Bathroom & en-suite
- Generous living/dining room
- Spacious dining kitchen
- Double glazed windows
- West Didsbury location
- Gated development with allocated parking
- No onward chain

Postcode - M20 2DU

EPC Rating - D

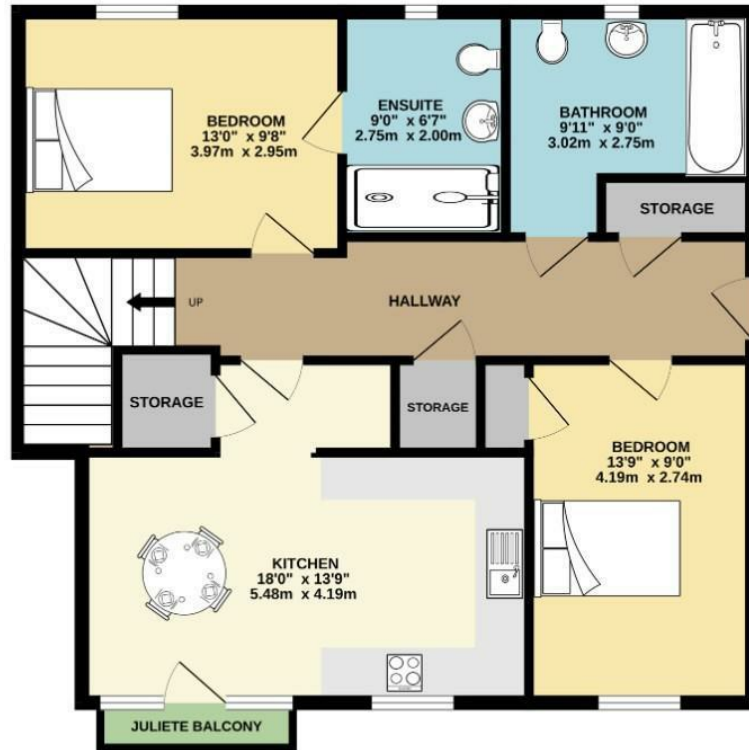
Floor Area - 1241.00 sq ft

Local Authority - Manchester City Council

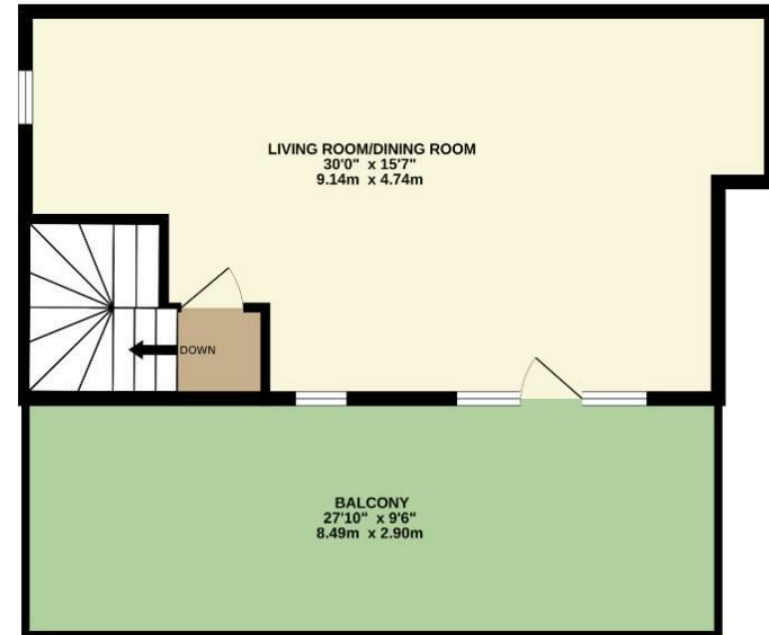
Council Tax - F



SECOND FLOOR
793 sq.ft. (73.7 sq.m.) approx.



TOP FLOOR
448 sq.ft. (41.6 sq.m.) approx.



TOTAL FLOOR AREA : 1241 sq.ft. (115.3 sq.m.) approx.
Measurements are approximate. Not to scale. Illustrative purposes only
Made with Metropix ©2025



These particulars are believed to be accurate but they are not guaranteed and do not form a contract. Neither Jordan Fishwick nor the vendor or lessor accept any responsibility in respect of these particulars, which are not intended to be statements or representations of fact and any intending purchaser or lessee must satisfy himself by inspection or otherwise as to the correctness of each of the statements contained in these particulars. Any floorplans on this brochure are for illustrative purposes only and are not necessarily to scale.

Offices also at: Wilmslow, Macclesfield, Hale, Sale, Chorlton, Glossop, Manchester & Salford

757-759 Wilmslow Road, Didsbury Village, Manchester

0161 445 4480

didsbury@jordanfishwick.co.uk
www.jordanfishwick.co.uk